

Cytoplast™ TXT-200 & TXT-200 Singles

Micro-textured, high-density PTFE membrane

Most popular
membrane for
socket grafting

TXT-200 Singles

12 mm x 24 mm

TXT1224-1 (1 membrane per box)

TXT1224 (10 membranes per box)

shown actual size.



TXT-200

25 mm x 30 mm

TXT2530-1 (1 membrane per box)

TXT2530 (4 membranes per box)



Features & Benefits

Non-Resorbable

Won't resorb prematurely – you dictate healing time

100% Dense (non-expanded) PTFE

Impervious to bacteria (pore size less than 0.3 µm)

Data on file

Purposely leave the membrane exposed

Preservation of the soft tissue architecture and keratinized mucosa

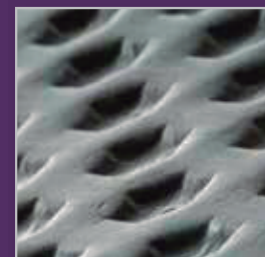
Soft tissue attaches, but doesn't grow through the membrane

Exposed membrane allows for non-surgical removal; no anesthesia required

Hexagonal dimples increase surface area

Designed to increase membrane stabilization

The patented Regentex™ surface helps stabilize the membrane and the soft tissue flap. Hexagonal surface dimples provide a textured surface that increases the area available for cellular attachment without increasing porosity. U.S. Patent # 5,957,690



“I always know, *in advance*, the results of my bone grafting when I use Cytoplast™ TXT-200 as a membrane. *Why bother with other membranes?*”

Mark Cohen, DDS; Periodontist